

ANEXO

CUADRO DE COORDENADAS DE LOS POLIGONOS QUE CONFORMAN LAS ÁREAS PRIORITARIAS DE INTERVENCIÓN PARA REASENTAMIENTO EN EL DEPARTAMENTO DEL CAUCA

| AREA DE INTERVENCIÓN PRIORITARIA MERCADERES POLIGONO 1 | | | |
|--|------------|---------------|-----------------|
| OBJECTID | NOMBRE | Latitud | Longitud |
| 0 | MERCADERES | 1,80662870196 | -77,30140662850 |
| 1 | MERCADERES | 1,81558668687 | -77,28944106440 |
| 2 | MERCADERES | 1,82186855178 | -77,28230787060 |
| 3 | MERCADERES | 1,82994449225 | -77,27948492560 |
| 4 | MERCADERES | 1,83584650707 | -77,27966849260 |
| 5 | MERCADERES | 1,84636585982 | -77,27467813150 |
| 6 | MERCADERES | 1,87412482839 | -77,24852268010 |
| 7 | MERCADERES | 1,89135406239 | -77,23568275760 |
| 8 | MERCADERES | 1,90375660218 | -77,22371405040 |
| 9 | MERCADERES | 1,91432654503 | -77,21499531380 |
| 10 | MERCADERES | 1,93104542704 | -77,21840838670 |
| 11 | MERCADERES | 1,94884236752 | -77,21068084920 |
| 12 | MERCADERES | 1,95473006749 | -77,20099726790 |
| 13 | MERCADERES | 1,96567782051 | -77,19795566500 |
| 14 | MERCADERES | 1,97232301446 | -77,19076535380 |
| 15 | MERCADERES | 1,97223413013 | -77,17996531740 |
| 16 | MERCADERES | 1,96884780336 | -77,16479335360 |
| 17 | MERCADERES | 1,96769402596 | -77,15366367750 |
| 18 | MERCADERES | 1,96589833987 | -77,14014620020 |
| 19 | MERCADERES | 1,96050521813 | -77,12922442330 |
| 20 | MERCADERES | 1,95317738055 | -77,12573281880 |
| 21 | MERCADERES | 1,94174376769 | -77,12389252530 |
| 22 | MERCADERES | 1,93627602386 | -77,12690467340 |
| 23 | MERCADERES | 1,93179797533 | -77,13770046020 |
| 24 | MERCADERES | 1,92068919497 | -77,15236798670 |
| 25 | MERCADERES | 1,91059446611 | -77,15488729280 |
| 26 | MERCADERES | 1,90535681583 | -77,15243939930 |
| 27 | MERCADERES | 1,89618544262 | -77,16141944010 |
| 28 | MERCADERES | 1,89028730967 | -77,16782289040 |
| 29 | MERCADERES | 1,88945976794 | -77,18485014020 |
| 30 | MERCADERES | 1,88947283013 | -77,19150301810 |
| 31 | MERCADERES | 1,88535116041 | -77,19874477520 |
| 32 | MERCADERES | 1,87598320739 | -77,20298537390 |
| 33 | MERCADERES | 1,86823064776 | -77,20212872650 |
| 34 | MERCADERES | 1,86287103139 | -77,19898933630 |
| 35 | MERCADERES | 1,85195964499 | -77,20307879460 |
| 36 | MERCADERES | 1,85205371641 | -77,22429077980 |
| 37 | MERCADERES | 1,84560734153 | -77,24281997040 |
| 38 | MERCADERES | 1,83384008909 | -77,25192606850 |
| 39 | MERCADERES | 1,82749627064 | -77,25543519420 |
| 40 | MERCADERES | 1,82121579252 | -77,26077814010 |
| 41 | MERCADERES | 1,80669725313 | -77,26563749390 |
| 42 | MERCADERES | 1,80010766245 | -77,26870967450 |
| 43 | MERCADERES | 1,78926788854 | -77,27398145190 |



| | | | |
|----|------------|---------------|-----------------|
| 44 | MERCADERES | 1,77805162840 | -77,27502060200 |
| 45 | MERCADERES | 1,77262846140 | -77,27706010120 |
| 46 | MERCADERES | 1,77386271288 | -77,28899040190 |
| 47 | MERCADERES | 1,77957736861 | -77,29281781040 |
| 48 | MERCADERES | 1,79270469472 | -77,29850429860 |
| 49 | MERCADERES | 1,79853678998 | -77,30088294150 |
| 50 | MERCADERES | 1,80662870196 | -77,30140662850 |

| AREA DE INTERVENCIÓN PRIORITARIA PATIA | | | |
|--|--------|---------------|-----------------|
| OBJECTID | NOMBRE | Latitud | Longitud |
| 51 | PATIA | 2,09462378730 | -76,95586988640 |
| 52 | PATIA | 2,09342374360 | -76,96215940260 |
| 53 | PATIA | 2,08810008685 | -76,96596516950 |
| 54 | PATIA | 2,08510927654 | -76,96828427780 |
| 55 | PATIA | 2,07601699733 | -76,97244700510 |
| 56 | PATIA | 2,06709258123 | -76,98278738640 |
| 57 | PATIA | 2,06379102533 | -76,99120685860 |
| 58 | PATIA | 2,06996457026 | -76,99434592910 |
| 59 | PATIA | 2,07964063536 | -76,99591461260 |
| 60 | PATIA | 2,08532622800 | -76,99434512570 |
| 61 | PATIA | 2,09394003794 | -76,99063441220 |
| 62 | PATIA | 2,09623646453 | -76,97978889510 |
| 63 | PATIA | 2,10423032123 | -76,97264687070 |
| 64 | PATIA | 2,11600992879 | -76,97199677720 |
| 65 | PATIA | 2,12419301315 | -76,96885671320 |
| 66 | PATIA | 2,12921754850 | -76,96471790430 |
| 67 | PATIA | 2,13280571475 | -76,95187412850 |
| 68 | PATIA | 2,12540850242 | -76,94054524680 |
| 69 | PATIA | 2,11481583460 | -76,94373847900 |
| 70 | PATIA | 2,10222042945 | -76,95051794050 |
| 71 | PATIA | 2,10263826734 | -76,95260893960 |
| 72 | PATIA | 2,09462378730 | -76,95586988640 |

| AREA DE INTERVENCIÓN PRIORITARIA SUCRE | | | |
|--|--------|---------------|-----------------|
| OBJECTID | NOMBRE | Latitud | Longitud |
| 73 | SUCRE | 2,05778866444 | -76,95792308720 |
| 74 | SUCRE | 2,06149342885 | -76,95297951780 |
| 75 | SUCRE | 2,06173459877 | -76,94620015480 |
| 76 | SUCRE | 2,06727307518 | -76,94056743700 |
| 77 | SUCRE | 2,07818370292 | -76,93564332740 |
| 78 | SUCRE | 2,08457242283 | -76,93571410680 |
| 79 | SUCRE | 2,08873603370 | -76,93771155560 |
| 80 | SUCRE | 2,09588442434 | -76,93258333610 |
| 81 | SUCRE | 2,10914959285 | -76,92858641730 |
| 82 | SUCRE | 2,10943704666 | -76,93195419020 |
| 83 | SUCRE | 2,11064328138 | -76,93492231230 |
| 84 | SUCRE | 2,11322776593 | -76,93806156040 |



| | | | |
|-----|-------|---------------|-----------------|
| 85 | SUCRE | 2,11420411082 | -76,93908894120 |
| 86 | SUCRE | 2,11776450496 | -76,93846072730 |
| 87 | SUCRE | 2,12718219080 | -76,93541194230 |
| 88 | SUCRE | 2,13065130026 | -76,93101154240 |
| 89 | SUCRE | 2,13686378087 | -76,92895137650 |
| 90 | SUCRE | 2,14332296381 | -76,91610717140 |
| 91 | SUCRE | 2,14332263296 | -76,91301519890 |
| 92 | SUCRE | 2,13627213120 | -76,90972405960 |
| 93 | SUCRE | 2,13351102367 | -76,90183764860 |
| 94 | SUCRE | 2,12729776333 | -76,89676267320 |
| 95 | SUCRE | 2,12358843062 | -76,89224412950 |
| 96 | SUCRE | 2,12107550017 | -76,88796330340 |
| 97 | SUCRE | 2,11461486104 | -76,88665597260 |
| 98 | SUCRE | 2,10827484243 | -76,89343513940 |
| 99 | SUCRE | 2,10839540796 | -76,90140271410 |
| 100 | SUCRE | 2,10624249891 | -76,90663539740 |
| 101 | SUCRE | 2,10708056261 | -76,91210559020 |
| 102 | SUCRE | 2,10684194620 | -76,91840833460 |
| 103 | SUCRE | 2,10058434979 | -76,92130442930 |
| 104 | SUCRE | 2,09255596889 | -76,92165117070 |
| 105 | SUCRE | 2,08556970193 | -76,92135217300 |
| 106 | SUCRE | 2,07776121122 | -76,91849227310 |
| 107 | SUCRE | 2,06744804452 | -76,92033748430 |
| 108 | SUCRE | 2,05640117413 | -76,92610640790 |
| 109 | SUCRE | 2,05217958841 | -76,93364234940 |
| 110 | SUCRE | 2,04546404352 | -76,94292929200 |
| 111 | SUCRE | 2,03635052058 | -76,94347694060 |
| 112 | SUCRE | 2,02727921068 | -76,93720013500 |
| 113 | SUCRE | 2,02201156551 | -76,94061559420 |
| 114 | SUCRE | 2,01818361156 | -76,94656155490 |
| 115 | SUCRE | 2,01564168652 | -76,95567090990 |
| 116 | SUCRE | 2,01480126070 | -76,96404522370 |
| 117 | SUCRE | 2,02140574625 | -76,97003798810 |
| 118 | SUCRE | 2,02632117451 | -76,97581361800 |
| 119 | SUCRE | 2,03421747373 | -76,97771575030 |
| 120 | SUCRE | 2,04200807054 | -76,97738555400 |
| 121 | SUCRE | 2,04322834809 | -76,97674333810 |
| 122 | SUCRE | 2,04562002263 | -76,97280689020 |
| 123 | SUCRE | 2,05144502103 | -76,97034193400 |
| 124 | SUCRE | 2,05234401549 | -76,96439934780 |
| 125 | SUCRE | 2,05385142085 | -76,96375709760 |
| 126 | SUCRE | 2,05751218270 | -76,96111690810 |
| 127 | SUCRE | 2,05778866444 | -76,95792308720 |

| AREA DE INTERVENCIÓN PRIORITARIA ROSAS | | | |
|--|--------|---------------|-----------------|
| OBJECTID | NOMBRE | Latitud | Longitud |
| 128 | ROSAS | 2,26802132201 | -76,74548161730 |
| 129 | ROSAS | 2,25909572240 | -76,76040302830 |
| 130 | ROSAS | 2,25825394000 | -76,76596353900 |

| | | | |
|-----|-------|---------------|-----------------|
| 131 | ROSAS | 2,25739343222 | -76,77007393600 |
| 132 | ROSAS | 2,25800069177 | -76,77136944460 |
| 133 | ROSAS | 2,25874326677 | -76,77161498400 |
| 134 | ROSAS | 2,25950433469 | -76,77244257780 |
| 135 | ROSAS | 2,26036608644 | -76,77416926320 |
| 136 | ROSAS | 2,26092626969 | -76,77551067910 |
| 137 | ROSAS | 2,26223295292 | -76,77668068330 |
| 138 | ROSAS | 2,26372589739 | -76,77606669410 |
| 139 | ROSAS | 2,26316562436 | -76,77429712620 |
| 140 | ROSAS | 2,26287807936 | -76,77232770040 |
| 141 | ROSAS | 2,26325095382 | -76,77047230960 |
| 142 | ROSAS | 2,26552775408 | -76,77006152310 |
| 143 | ROSAS | 2,26706982996 | -76,77074266680 |
| 144 | ROSAS | 2,27007067683 | -76,77236900930 |
| 145 | ROSAS | 2,27183667624 | -76,77309649700 |
| 146 | ROSAS | 2,27343027951 | -76,77326742380 |
| 147 | ROSAS | 2,27495190765 | -76,77252497350 |
| 148 | ROSAS | 2,27416216539 | -76,77188291120 |
| 149 | ROSAS | 2,27219493455 | -76,77002800090 |
| 150 | ROSAS | 2,27058619886 | -76,76625585360 |
| 151 | ROSAS | 2,26935303324 | -76,76169774140 |
| 152 | ROSAS | 2,26885731829 | -76,75957002290 |
| 153 | ROSAS | 2,26911253958 | -76,75724982220 |
| 154 | ROSAS | 2,27347083466 | -76,75666967280 |
| 155 | ROSAS | 2,27548422958 | -76,75737034250 |
| 156 | ROSAS | 2,27636645891 | -76,75872791300 |
| 157 | ROSAS | 2,27846876187 | -76,75932283830 |
| 158 | ROSAS | 2,27976077051 | -76,75900143970 |
| 159 | ROSAS | 2,27757023004 | -76,75372137050 |
| 160 | ROSAS | 2,27828741244 | -76,75090253770 |
| 161 | ROSAS | 2,27825101502 | -76,74869042380 |
| 162 | ROSAS | 2,27670759243 | -76,74822694270 |
| 163 | ROSAS | 2,27531394881 | -76,74532855080 |
| 164 | ROSAS | 2,27293564393 | -76,74392488130 |
| 165 | ROSAS | 2,27128703721 | -76,74387530840 |
| 166 | ROSAS | 2,26802132201 | -76,74548161730 |

| AREA DE INTERVENCIÓN PRIORITARIA TIMBIO | | | |
|---|--------|---------------|-----------------|
| OBJECTID | NOMBRE | Latitud | Longitud |
| 167 | TIMBIO | 2,41094503363 | -76,68025641760 |
| 168 | TIMBIO | 2,40800000495 | -76,67352519420 |
| 169 | TIMBIO | 2,40610953404 | -76,67276452840 |
| 170 | TIMBIO | 2,39950977331 | -76,66783613450 |
| 171 | TIMBIO | 2,39546815780 | -76,66247650230 |
| 172 | TIMBIO | 2,39127951464 | -76,66061004640 |
| 173 | TIMBIO | 2,38724189919 | -76,65717860110 |
| 174 | TIMBIO | 2,38166194599 | -76,65695552150 |
| 175 | TIMBIO | 2,37490819664 | -76,65988195770 |
| 176 | TIMBIO | 2,37150236210 | -76,66142859680 |

| | | | |
|-----|--------|---------------|-----------------|
| 177 | TIMBIO | 2,36393987351 | -76,66312627580 |
| 178 | TIMBIO | 2,35819723731 | -76,66269980440 |
| 179 | TIMBIO | 2,35374580725 | -76,65941847650 |
| 180 | TIMBIO | 2,34848794385 | -76,65844564410 |
| 181 | TIMBIO | 2,34096872847 | -76,65942227290 |
| 182 | TIMBIO | 2,33910495271 | -76,66798615960 |
| 183 | TIMBIO | 2,34025520286 | -76,67398016960 |
| 184 | TIMBIO | 2,34132711562 | -76,67836326460 |
| 185 | TIMBIO | 2,33955853359 | -76,68305337560 |
| 186 | TIMBIO | 2,33299776388 | -76,68923158190 |
| 187 | TIMBIO | 2,33283967121 | -76,69496192150 |
| 188 | TIMBIO | 2,33478830311 | -76,69865747870 |
| 189 | TIMBIO | 2,33755864861 | -76,70018992200 |
| 190 | TIMBIO | 2,34307405144 | -76,69948117090 |
| 191 | TIMBIO | 2,34887635631 | -76,70023884750 |
| 192 | TIMBIO | 2,35060065623 | -76,70594734790 |
| 193 | TIMBIO | 2,35088884617 | -76,70994354880 |
| 194 | TIMBIO | 2,35347519598 | -76,71836362000 |
| 195 | TIMBIO | 2,35534295474 | -76,72392941030 |
| 196 | TIMBIO | 2,35860643656 | -76,73261579950 |
| 197 | TIMBIO | 2,36334157934 | -76,73484415290 |
| 198 | TIMBIO | 2,36855209118 | -76,72892148990 |
| 199 | TIMBIO | 2,37366950828 | -76,71820383900 |
| 200 | TIMBIO | 2,37523427689 | -76,71031596460 |
| 201 | TIMBIO | 2,37662443081 | -76,70269476920 |
| 202 | TIMBIO | 2,37929397048 | -76,69276750660 |
| 203 | TIMBIO | 2,38391670031 | -76,68978647730 |
| 204 | TIMBIO | 2,38639969335 | -76,69265405770 |
| 205 | TIMBIO | 2,39460384000 | -76,69612489920 |
| 206 | TIMBIO | 2,40124191762 | -76,69271140760 |
| 207 | TIMBIO | 2,40746873538 | -76,69316181020 |
| 208 | TIMBIO | 2,41094503363 | -76,68025641760 |

| AREA DE INTERVENCIÓN PRIORITARIA SOTARÁ POLIGONO 1 | | | |
|--|---------------------|---------------|-----------------|
| OBJECTID | NOMBRE | Latitud | Longitud |
| 209 | SOTARA (POLIGONO 1) | 2,30094907498 | -76,63803172660 |
| 210 | SOTARA (POLIGONO 1) | 2,29606099389 | -76,63109133730 |
| 211 | SOTARA (POLIGONO 1) | 2,29047160687 | -76,62855838250 |
| 212 | SOTARA (POLIGONO 1) | 2,28524088130 | -76,62621474440 |
| 213 | SOTARA (POLIGONO 1) | 2,28388520735 | -76,62132305950 |
| 214 | SOTARA (POLIGONO 1) | 2,28068424567 | -76,61443466850 |
| 215 | SOTARA (POLIGONO 1) | 2,27666045641 | -76,61114154660 |
| 216 | SOTARA (POLIGONO 1) | 2,27460804086 | -76,59874234840 |
| 217 | SOTARA (POLIGONO 1) | 2,27195604936 | -76,59104686830 |
| 218 | SOTARA (POLIGONO 1) | 2,27005248732 | -76,58733664750 |
| 219 | SOTARA (POLIGONO 1) | 2,26704626586 | -76,59060695470 |
| 220 | SOTARA (POLIGONO 1) | 2,26725982114 | -76,59788502130 |
| 221 | SOTARA (POLIGONO 1) | 2,26417953749 | -76,59862885450 |
| 222 | SOTARA (POLIGONO 1) | 2,26146292047 | -76,59212602840 |

| | | | |
|-----|---------------------|---------------|-----------------|
| 223 | SOTARA (POLIGONO 1) | 2,25999255864 | -76,57732570030 |
| 224 | SOTARA (POLIGONO 1) | 2,25732714893 | -76,57258173430 |
| 225 | SOTARA (POLIGONO 1) | 2,25112867473 | -76,57364093160 |
| 226 | SOTARA (POLIGONO 1) | 2,25033234635 | -76,57827231950 |
| 227 | SOTARA (POLIGONO 1) | 2,24695499207 | -76,58162533280 |
| 228 | SOTARA (POLIGONO 1) | 2,24826892288 | -76,58552353260 |
| 229 | SOTARA (POLIGONO 1) | 2,25254705348 | -76,58984746000 |
| 230 | SOTARA (POLIGONO 1) | 2,25522340315 | -76,59462646490 |
| 231 | SOTARA (POLIGONO 1) | 2,25651084214 | -76,59712044490 |
| 232 | SOTARA (POLIGONO 1) | 2,25878244509 | -76,60300054310 |
| 233 | SOTARA (POLIGONO 1) | 2,25734010733 | -76,60731851260 |
| 234 | SOTARA (POLIGONO 1) | 2,25106820574 | -76,60963377270 |
| 235 | SOTARA (POLIGONO 1) | 2,24888542358 | -76,61193512400 |
| 236 | SOTARA (POLIGONO 1) | 2,25202404959 | -76,61501892380 |
| 237 | SOTARA (POLIGONO 1) | 2,25864761551 | -76,61653724070 |
| 238 | SOTARA (POLIGONO 1) | 2,26443956433 | -76,62067791510 |
| 239 | SOTARA (POLIGONO 1) | 2,26691627059 | -76,62149774650 |
| 240 | SOTARA (POLIGONO 1) | 2,27177942874 | -76,62230914590 |
| 241 | SOTARA (POLIGONO 1) | 2,27587036282 | -76,62909147060 |
| 242 | SOTARA (POLIGONO 1) | 2,28208265614 | -76,63346156020 |
| 243 | SOTARA (POLIGONO 1) | 2,28941802009 | -76,63562602390 |
| 244 | SOTARA (POLIGONO 1) | 2,29118775298 | -76,63966854990 |
| 245 | SOTARA (POLIGONO 1) | 2,29375417893 | -76,64402180190 |
| 246 | SOTARA (POLIGONO 1) | 2,29960317539 | -76,65204590230 |
| 247 | SOTARA (POLIGONO 1) | 2,30342910089 | -76,65033533480 |
| 248 | SOTARA (POLIGONO 1) | 2,30378534174 | -76,64755801380 |
| 249 | SOTARA (POLIGONO 1) | 2,30094907498 | -76,63803172660 |

| AREA DE INTERVENCIÓN PRIORITARIA SOTARÁ POLIGONO 2 | | | |
|--|---------------------|---------------|-----------------|
| OBJECTID | NOMBRE | Latitud | Longitud |
| 250 | SOTARA (POLIGONO 2) | 2,33783315572 | -76,58882015210 |
| 251 | SOTARA (POLIGONO 2) | 2,32984287828 | -76,58503375580 |
| 252 | SOTARA (POLIGONO 2) | 2,32697779319 | -76,57960227070 |
| 253 | SOTARA (POLIGONO 2) | 2,31564442742 | -76,58144835040 |
| 254 | SOTARA (POLIGONO 2) | 2,31188411156 | -76,58029017460 |
| 255 | SOTARA (POLIGONO 2) | 2,30737148751 | -76,58458958210 |
| 256 | SOTARA (POLIGONO 2) | 2,30010851412 | -76,58513984150 |
| 257 | SOTARA (POLIGONO 2) | 2,29421853783 | -76,58284803090 |
| 258 | SOTARA (POLIGONO 2) | 2,29059801924 | -76,57891083180 |
| 259 | SOTARA (POLIGONO 2) | 2,28996536234 | -76,57206111240 |
| 260 | SOTARA (POLIGONO 2) | 2,28602158141 | -76,56168475760 |
| 261 | SOTARA (POLIGONO 2) | 2,28863344579 | -76,55587080920 |
| 262 | SOTARA (POLIGONO 2) | 2,28771737891 | -76,54887370720 |
| 263 | SOTARA (POLIGONO 2) | 2,28597257045 | -76,54533242660 |
| 264 | SOTARA (POLIGONO 2) | 2,27753784203 | -76,54407459680 |
| 265 | SOTARA (POLIGONO 2) | 2,27034492537 | -76,54739933380 |
| 266 | SOTARA (POLIGONO 2) | 2,26868676360 | -76,55262112160 |
| 267 | SOTARA (POLIGONO 2) | 2,27328251395 | -76,56138956960 |
| 268 | SOTARA (POLIGONO 2) | 2,27571967442 | -76,57214488840 |

| | | | |
|-----|---------------------|---------------|-----------------|
| 269 | SOTARA (POLIGONO 2) | 2,27941018656 | -76,57972832050 |
| 270 | SOTARA (POLIGONO 2) | 2,28423318369 | -76,58977822940 |
| 271 | SOTARA (POLIGONO 2) | 2,28942519729 | -76,59348276650 |
| 272 | SOTARA (POLIGONO 2) | 2,29551717886 | -76,59597051450 |
| 273 | SOTARA (POLIGONO 2) | 2,30436089727 | -76,59693802760 |
| 274 | SOTARA (POLIGONO 2) | 2,31251625695 | -76,60007509090 |
| 275 | SOTARA (POLIGONO 2) | 2,32245579004 | -76,59558116760 |
| 276 | SOTARA (POLIGONO 2) | 2,33504378153 | -76,60072216210 |
| 277 | SOTARA (POLIGONO 2) | 2,34305849360 | -76,60277976580 |
| 278 | SOTARA (POLIGONO 2) | 2,35198197391 | -76,60637012360 |
| 279 | SOTARA (POLIGONO 2) | 2,36253795884 | -76,61205668280 |
| 280 | SOTARA (POLIGONO 2) | 2,36739922965 | -76,62113337590 |
| 281 | SOTARA (POLIGONO 2) | 2,37243927139 | -76,62658577890 |
| 282 | SOTARA (POLIGONO 2) | 2,37580322643 | -76,62441562160 |
| 283 | SOTARA (POLIGONO 2) | 2,37885752314 | -76,61527135310 |
| 284 | SOTARA (POLIGONO 2) | 2,37750147843 | -76,61282118850 |
| 285 | SOTARA (POLIGONO 2) | 2,37402124466 | -76,60749507710 |
| 286 | SOTARA (POLIGONO 2) | 2,36918176841 | -76,60222632920 |
| 287 | SOTARA (POLIGONO 2) | 2,36348412762 | -76,59928314310 |
| 288 | SOTARA (POLIGONO 2) | 2,35643214310 | -76,59797478710 |
| 289 | SOTARA (POLIGONO 2) | 2,35217281155 | -76,59742460340 |
| 290 | SOTARA (POLIGONO 2) | 2,34678849292 | -76,59521425580 |
| 291 | SOTARA (POLIGONO 2) | 2,33783315572 | -76,58882015210 |

| AREA DE INTERVENCIÓN PRIORITARIA SOTARÁ POLIGONO 3 | | | |
|--|--------------------|---------------|-----------------|
| OBJECTID | NOMBRE | Latitud | Longitud |
| 292 | SOTARA (POLIGONO3) | 2,41321104827 | -76,59135171710 |
| 293 | SOTARA (POLIGONO3) | 2,40983132368 | -76,58326588010 |
| 294 | SOTARA (POLIGONO3) | 2,40539969803 | -76,58162290860 |
| 295 | SOTARA (POLIGONO3) | 2,40172459920 | -76,58179550780 |
| 296 | SOTARA (POLIGONO3) | 2,39741795647 | -76,58231087430 |
| 297 | SOTARA (POLIGONO3) | 2,39477564370 | -76,58014238390 |
| 298 | SOTARA (POLIGONO3) | 2,39287978268 | -76,57780236040 |
| 299 | SOTARA (POLIGONO3) | 2,38633189668 | -76,57369423920 |
| 300 | SOTARA (POLIGONO3) | 2,38208773549 | -76,57021301840 |
| 301 | SOTARA (POLIGONO3) | 2,37605398835 | -76,57020315070 |
| 302 | SOTARA (POLIGONO3) | 2,37132031824 | -76,57341224000 |
| 303 | SOTARA (POLIGONO3) | 2,36980039570 | -76,57603244140 |
| 304 | SOTARA (POLIGONO3) | 2,36700349100 | -76,57938877070 |
| 305 | SOTARA (POLIGONO3) | 2,36921769823 | -76,58209378200 |
| 306 | SOTARA (POLIGONO3) | 2,37247867129 | -76,58470923020 |
| 307 | SOTARA (POLIGONO3) | 2,37523142795 | -76,58797902220 |
| 308 | SOTARA (POLIGONO3) | 2,37857219512 | -76,59297440320 |
| 309 | SOTARA (POLIGONO3) | 2,38395607973 | -76,59392402580 |
| 310 | SOTARA (POLIGONO3) | 2,39173185170 | -76,59261298290 |
| 311 | SOTARA (POLIGONO3) | 2,39652041504 | -76,60165066440 |
| 312 | SOTARA (POLIGONO3) | 2,39652140921 | -76,60450520230 |
| 313 | SOTARA (POLIGONO3) | 2,39460902066 | -76,60962023590 |
| 314 | SOTARA (POLIGONO3) | 2,38898659738 | -76,61081152730 |



| | | | |
|-----|--------------------|---------------|-----------------|
| 315 | SOTARA (POLIGONO3) | 2,38539848630 | -76,61354831830 |
| 316 | SOTARA (POLIGONO3) | 2,38360524896 | -76,61735494170 |
| 317 | SOTARA (POLIGONO3) | 2,37889110953 | -76,62273288420 |
| 318 | SOTARA (POLIGONO3) | 2,37874137465 | -76,62798281060 |
| 319 | SOTARA (POLIGONO3) | 2,37960247092 | -76,63254272800 |
| 320 | SOTARA (POLIGONO3) | 2,38017793871 | -76,63830164350 |
| 321 | SOTARA (POLIGONO3) | 2,38149088675 | -76,64084570420 |
| 322 | SOTARA (POLIGONO3) | 2,38701129564 | -76,64309215400 |
| 323 | SOTARA (POLIGONO3) | 2,39160659050 | -76,64720125470 |
| 324 | SOTARA (POLIGONO3) | 2,39378965401 | -76,65011221660 |
| 325 | SOTARA (POLIGONO3) | 2,39654637409 | -76,65113900260 |
| 326 | SOTARA (POLIGONO3) | 2,39981929241 | -76,65016743770 |
| 327 | SOTARA (POLIGONO3) | 2,40389642832 | -76,65005198710 |
| 328 | SOTARA (POLIGONO3) | 2,41067449587 | -76,64984900010 |
| 329 | SOTARA (POLIGONO3) | 2,41590933776 | -76,65237487320 |
| 330 | SOTARA (POLIGONO3) | 2,41919959002 | -76,65326591310 |
| 331 | SOTARA (POLIGONO3) | 2,42263905919 | -76,65311616570 |
| 332 | SOTARA (POLIGONO3) | 2,42547945714 | -76,65014172080 |
| 333 | SOTARA (POLIGONO3) | 2,42323425304 | -76,64374928490 |
| 334 | SOTARA (POLIGONO3) | 2,41968369121 | -76,63577404700 |
| 335 | SOTARA (POLIGONO3) | 2,41784368614 | -76,62846687930 |
| 336 | SOTARA (POLIGONO3) | 2,41428128830 | -76,62230214750 |
| 337 | SOTARA (POLIGONO3) | 2,40997287213 | -76,61767917020 |
| 338 | SOTARA (POLIGONO3) | 2,41060376611 | -76,61539529980 |
| 339 | SOTARA (POLIGONO3) | 2,41469537122 | -76,61498237340 |
| 340 | SOTARA (POLIGONO3) | 2,41466657764 | -76,60800896160 |
| 341 | SOTARA (POLIGONO3) | 2,41409793847 | -76,59930877630 |
| 342 | SOTARA (POLIGONO3) | 2,41321104827 | -76,59135171710 |

Elaboró: Andrés Sanabria Rodríguez/contratista/GTI

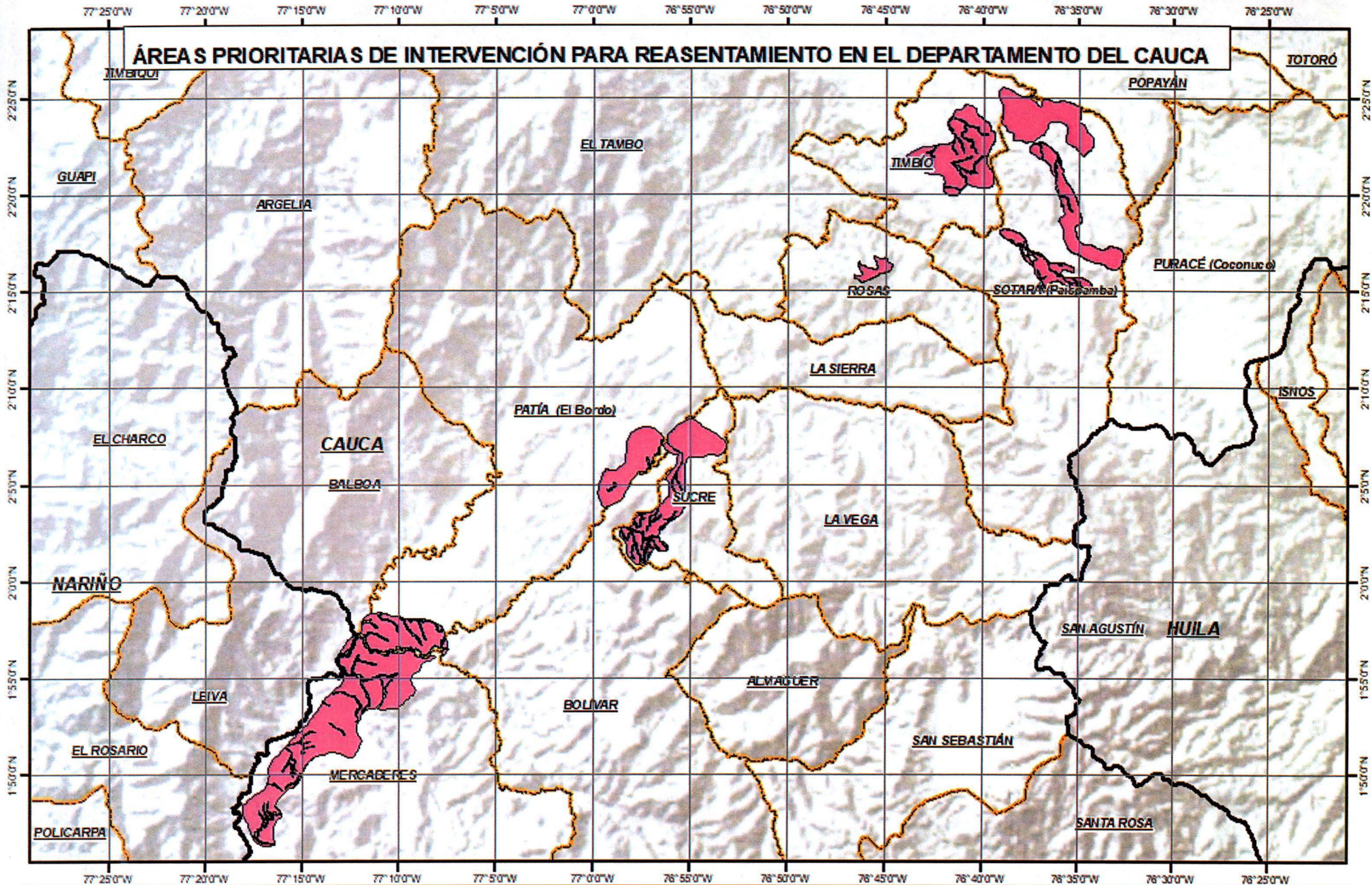
Fernando León Rivera/contratista/SDG

Hugo Vanstralen Iguarán/contratista/SCR HV

Alvaro Parra Erazo/contratista/SCR



Revisó y Aprobó: Oscar Bernardo Goyeneche Durán/Subdirector General/SDG

Sandra Sotomonte Nopssa/Subdirectora para el conocimiento del riesgo/ SCR




ÁREAS PRIORITARIAS DE INTERVENCIÓN PARA REASENTAMIENTO EN EL DEPARTAMENTO DEL CAUCA

Convenciones Básicas

-  Limite Departamental
-  Limite Municipal

Convenciones Temáticas

- Áreas Prioritarias de Intervención**
-  Alternativas Predios



Escala Gráfica



UNGRD

Unidad Nacional para la Gestión del Riesgo de Desastres

Sistema Nacional de Gestión del Riesgo de Desastres

Subdirección para el Conocimiento del Riesgo